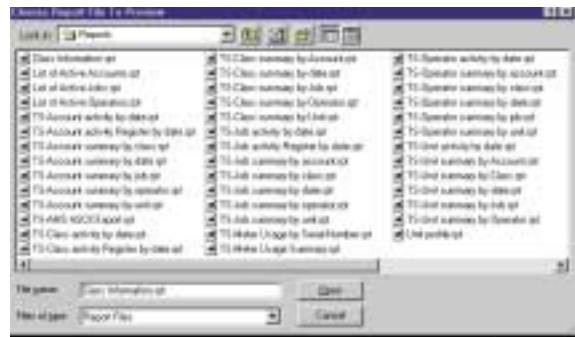


For greater control over your mail processing centers.

Take company-wide control of your mail processing!

System 36 information management system

System 36 — the economical, Windows®-based mail management system



Over 40 different reports standard with the Global software.



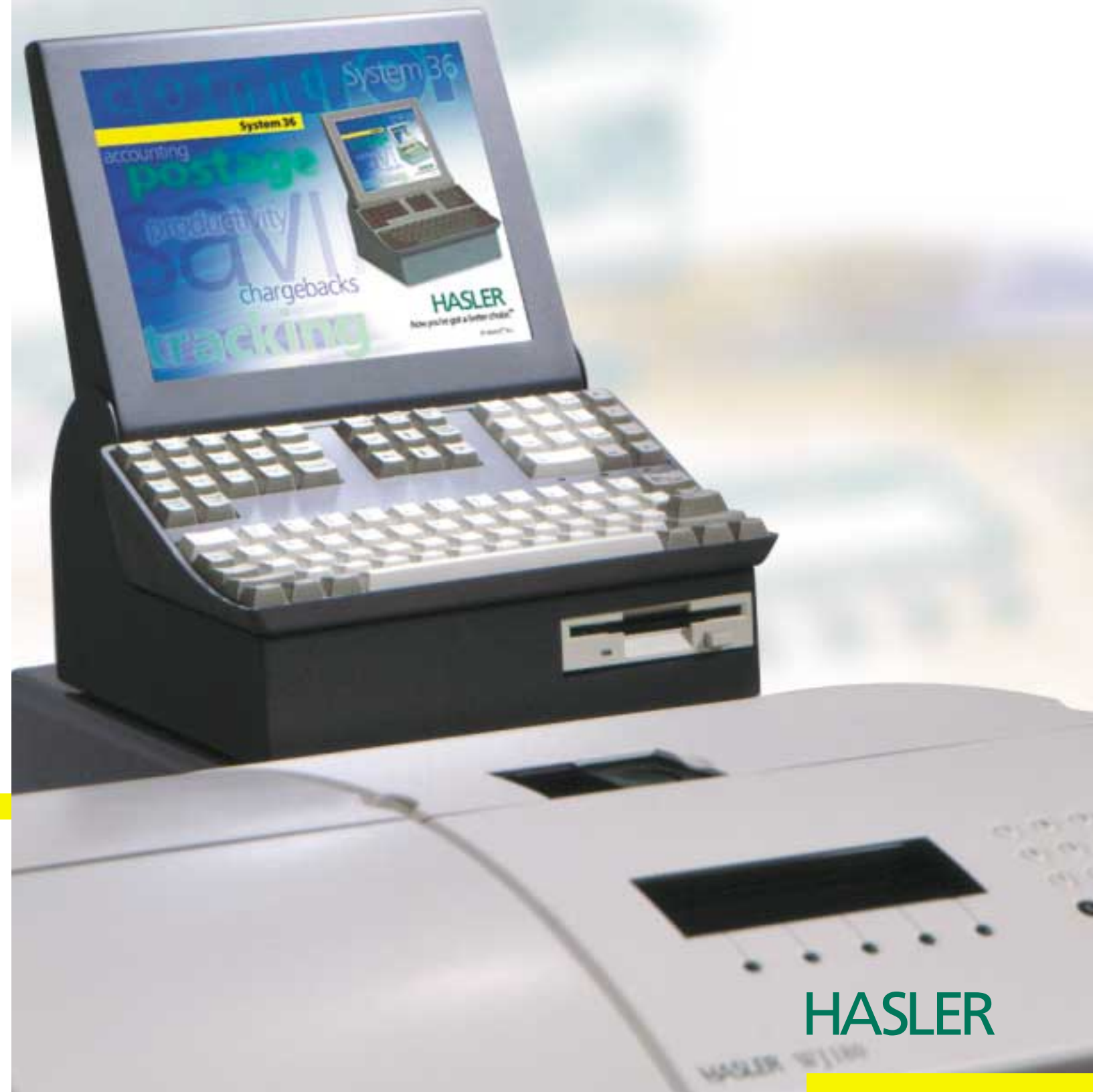
This uniquely designed, non-dedicated system will interface with Hasler, Pitney Bowes and other third-party postage meters for true company-wide accountability.

Reports can be saved in a variety of different file formats including Word or Excel and then saved to a folder or emailed using your existing network or email system.

- Character-separated values
- Character-separated values
- Comma-separated values (CSV)
- Crystal Reports (RPT)
- Crystal Reports 7.0 (RPT)
- Data Interchange Format (DIF)
- Excel 5.0 (XLS)
- Excel 5.0 (XLS) (Extended)
- Excel 7.0 (XLS)
- Excel 7.0 (XLS) (Extended)
- Excel 8.0 (XLS)
- Excel 8.0 (XLS) (Extended)
- HTML 3.2
- HTML 4.0 (DHTML)
- Lotus 1-2-3 (WK1)
- Lotus 1-2-3 (WK3)
- ODBC - dBase Files
- ODBC - dBase Files - Word
- ODBC - ECDCMusic
- ODBC - Excel Files
- ODBC - FoxPro Files - Word
- ODBC - MS Access Database
- ODBC - Visual FoxPro Database
- ODBC - Visual FoxPro Tables
- Paginated Text
- Record style (columns of values)
- Report Definition
- Rich Text Format
- Tab-separated text
- Tab-separated values
- Text
- Word for Windows document

Specifications

- Space-saver Pentium 233 PC with 10" color LCD screen
- 64 MB of RAM
- 10 GIG+ Hard Drive
- Windows 98 SP2
- Network Interface Card (NIC)
- LPT Printer Port
- Floppy Drive
- 2 USB ports
- Meter Interface Port



For a demonstration, more information or a variety of funding options to quickly and easily finance your new equipment, please contact your local Hasler dealer, or call **800/243-6275**. Fax: 203/929-6084. Email: info@haslerinc.com

Hasler, Inc.
Mailing Systems and Solutions
www.haslerinc.com

HASLER
America's better choice.™

Hasler, Inc. is the new name of Ascom Hasler Mailing Systems, Inc.

An ISO 9001 Quality System Certified company.
Hasler's network of independent dealers provides sales, service and support throughout the United States. All names, products and services are trademarks of their respective holders.

Accurate mail information management has never been so complete!



System 36 is the efficient, economical, Windows®-based account management system for consolidating company-wide mail processing information. Valuable accounting data can be stored and retrieved from a single source and reports can be generated in almost any file format: Excel™, Lotus 1-2-3™, Word™, ASCII, Access™, and many others. System 36 — the precision account management system — saves money, reduces error, boosts productivity and provides real accountability.

Pull down menus provide easy access to all commands

Instantly view and modify databases

Displays account information while the job is being processed

Unlimited number of accounts with up to 36-digit account numbers (alphanumeric)

Ascending and descending registers automatically account for postage activity



On-line help saves time

Reports include details and summary of information by Account, Job, Operator and Class of mail



Displays postage meter information



Unlimited number of operators and jobs with up to 20-digits for job name and number

The built-in Auto Accountant™ verifies the number of pieces and postage amount for each transaction

Easily adaptable to any business, System 36 uses existing hardware and communication configurations, and will interface with any device that handles paper such as mail machines, folder/inserters, copiers, printers, bursters, and more. And, with its open-architecture structure, System 36 is uniquely designed to interface with Hasler, Pitney Bowes and other third-party postage meters for true company-wide accountability.

What you get with System 36:

- Consolidation of company-wide accounting information
- Stand-alone or LAN-compatible with standard TCP/IP protocols
- Configuration of service and handling charges by percentage and piece
- Ability to set annual budgets
- Fuzzy-logic searches
- Automatic data backup
- Control to set unit name, number and location
- 10" color LCD screen that tilts to reduce glare
- Built-in, full alphanumeric keyboard
- Non-dedicated, Pentium processor-equipped, space-saving PC with Windows® OS can be used to run other applications



System 36 LAN configuration