

The Details:

iMCM G2 Family

Rate Change

- On Sunday, April 17, 2011 new rates will go into effect for USPS®.
- The new G2 rates will be available via download from the website the same as other updates.

When can I get the update?

- On April 12, 2011, **Version 8.36.00 (update)** will be available for download from the Neopost download site (www.solutions.neopost.com/software). This update will be for all 8.34.00 versions.
- This update may be run on a G2 system at any time before April 17, 2011. The current rates will continue to function until April 16, 2011 at 11:59p.m. At that time, the new rates will automatically be implemented.
- If the update is installed *after* April 17, 2011, the new rates will be installed at that time.
- If a SoftwareCare™ 2011 renewal was ordered, your activation will be included in the download and will be automatic. SoftwareCare customers that didn't renew must renew immediately in order for the download to work.

Please follow the April 2011 Rate Change Upgrade instructions below:

1 Prerequisites

The following items are necessary prior to attempting to install the upgrade

- G283600up.exe file downloaded from the Neopost Software website located at: <http://www.solutions.neopost.com/software/resources/downloads/downloads-g-series-products/>
- System has a current Software Care for 2011
- System currently has version 8.34.00 or higher installed

2 Installing the upgrade

Note: These instructions have been written for a standalone G2 installation. For Multi Station G2 installations the upgrade needs to be performed on every G2 workstation including G2 Network View clients. Verify that the G2 application is shut down on the workstation. For Network installations verify that all workstations have been shut down.

To upgrade the system perform the following steps:

1. Copy the G283600up.exe file to the system desktop. Run the upgrade by double clicking on it. Depending on the security setting on the PC the following message may be displayed. If it is select "Run". If the message is not displayed proceed to step 2.



2. The upgrade will now check if there are any open applications on the PC. If one is detected the following notification will be displayed. If this occurs select "Cancel" to stop the installation, exit all of the open applications, and restart the installation. If no notification is displayed proceed to step 3.

Note: The open applications shown in the example below will be different than what is displayed on the system you are installing on. The example is for reference only.



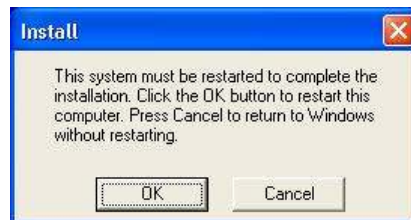
6. Select "Next" on the following screen.



7. Once the upgrade is complete the following will be displayed. Select "Skip Web Check".



8. Upon completion of the upgrade the system will need to be restarted. Select "OK" to restart the PC.

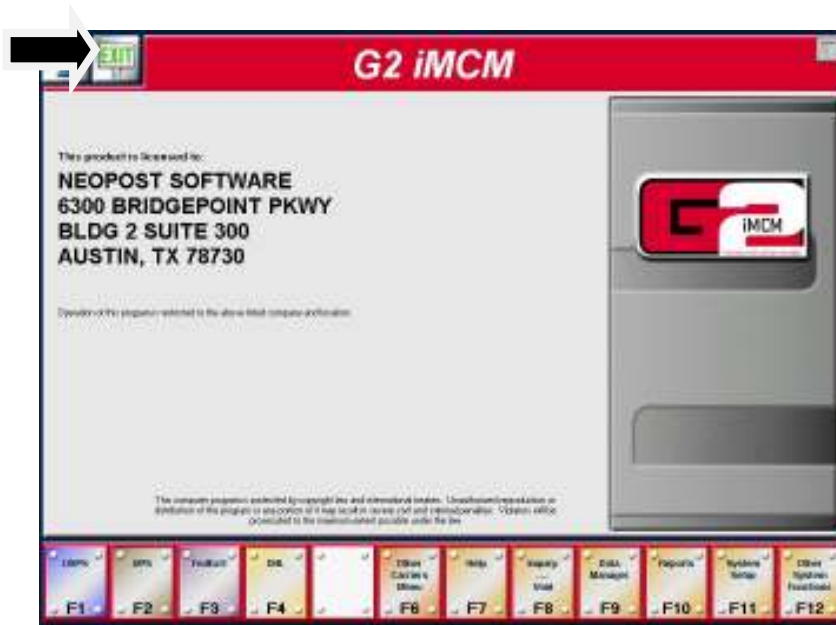


3 Verifying the installation

To verify what version is installed perform the following steps:

1. From the iMCM G2 Home Screen select the "i" button to display the system information.

| Note: The following screens are from the Neopost branded iMCM and are for reference only.



2. Verify that the version installed is 8.36.00.



